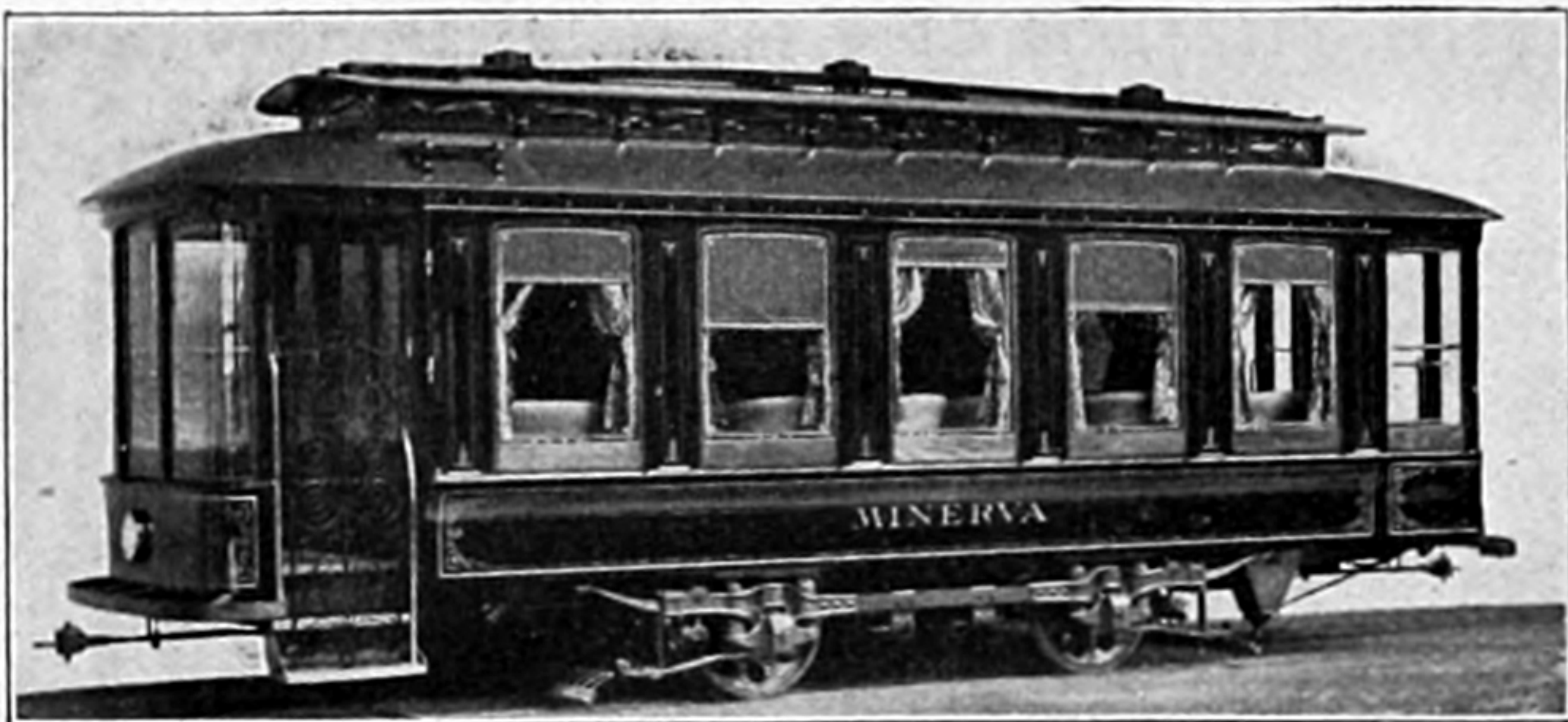
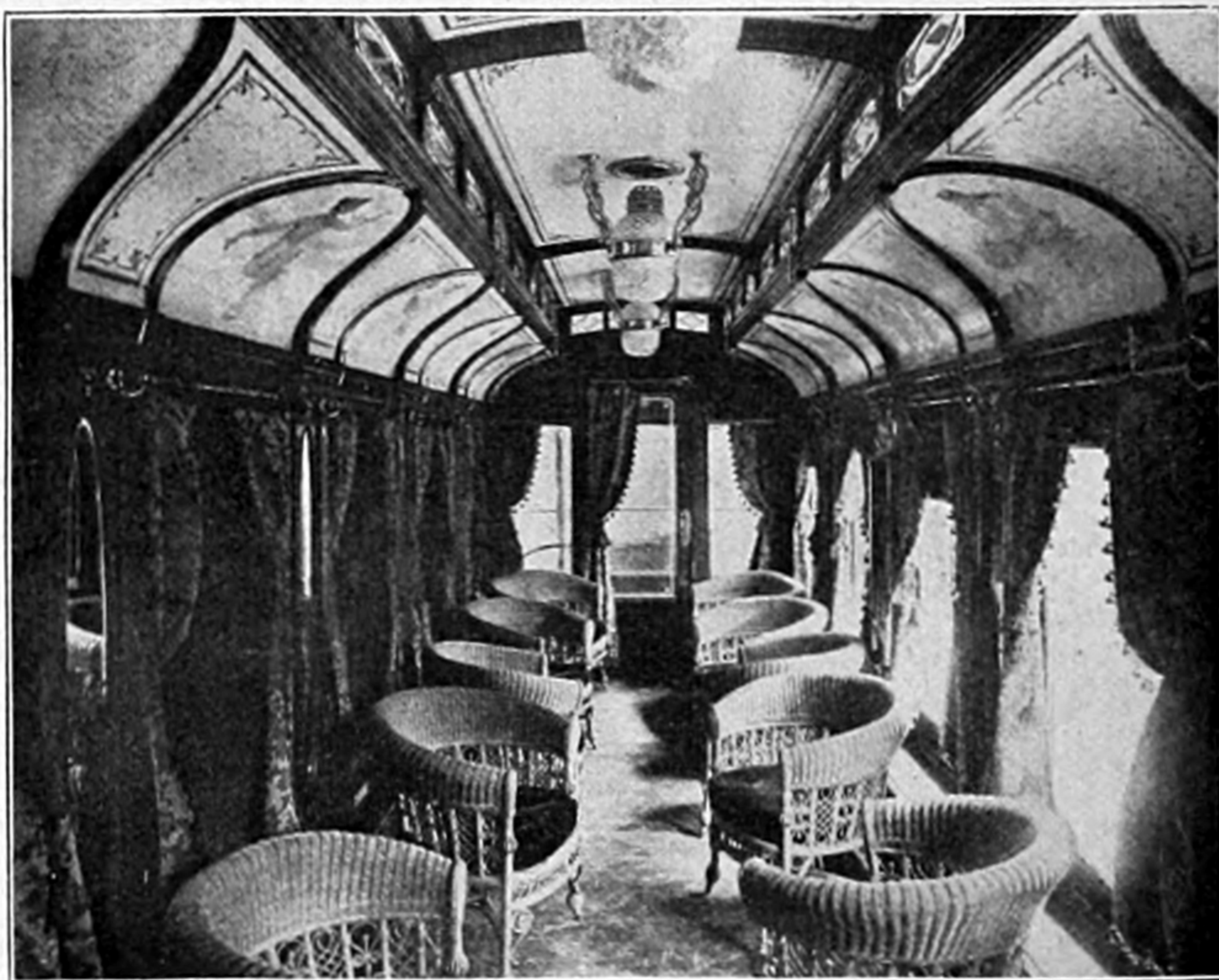

A COLUMBUS (O.) PALACE CAR.

The special car "Minerva," of which we illustrate exterior and interior views, was built for the Columbus (Ohio) Central Railway Company, by the Brownell Car Company, St. Louis, Mo. The body is 21 feet long, with vestibuled platforms, 3 feet, 6 inches long, and 7 feet, 6 inches wide over posts. The vestibules are permanent and designed to form an integral part of the car, which is quite an unusual thing in car construction. All of the continuous work is bent to shape. The interior is finished in selected mahogany, with all of the cappings, moulding, etc., hand carved. Between the windows, which are of French plate glass throughout, are oval mirrors extending from the ceilings the full length of the sash. On one side one mirror gives way to an ornamental water cooler of polished bronze, designed to match the rich metal trimmings of the car. The shades are of heavy green gros-grain silk, on spring rollers, and the portieres of green silk damask with gilt figures. In summer the side sashes may be removed and storm curtains of oak-



COLUMBUS PALACE CAR.

ette, on spring rollers, substituted. Ten chairs and four divans of rattan with plush-covered hair cushions provide seats for eighteen. The floor is covered with a Wilton carpet of color and design to harmonize with the other details, and the platforms and steps are provided with thick rubber mats. Over each window is a decorative painting of appropriate design and artistic merit. The subjects of these paintings, of which there are twenty, are from the mythology of Minerva. The car is lighted by three four-burner Pintsch lamps with cut-glass globes, and heated by four "consolidated" heaters, disposed under the side risers. The ventilator sashes are filled with beveled plate glass. Electric call bells are provided throughout the car. On the vestibules are electric headlights. A movable gate of



"MINERVA"—INTERIOR.

wrought iron is also provided. The car body is painted a deep quaker green with ornamentation in gold, and mounted on Brownell's No. 3 electric motor truck, equipped with two Westinghouse No. 12 motors. This car was especially designed for use by private parties, and no expense has been spared in making it a thing of beauty that will be a joy to hundreds. Rare taste has been displayed in the decoration and furnishing, without making the very common mistake of overdoing it.